

'EC' Series Check Valve

The Non-Return Valve

- Designed for the prevention of back-flow in high-pressure systems
- The 'EC' Series valve has a wide range of body and trim materials available
- Several types of sealing materials can be used to cope with most aggressive mediums
- Having a soft primary seal means it is suitable for gases or liquids
- Very compact unit, suitable for many arduous duties
- Bubble-tight close, with secondary metal-to-metal seal as standard

Materials of construction can be supplied to meet the requirements of NACE
MR -0175 latest revision.

Design Features

- Primary soft seal for bubble tight close, with secondary metal-to-metal seal as standard.
- Temperature range -40°C to 150°C as standard (other temperatures available on request)
- Available in 316ss, Duplex, Monel and other exotic materials.
- Many piston and spring material options available to cope with aggressive mediums.
- Close tolerance guided spring and piston to prevent grabbing or seizure.
- Full material traceability.
- Repair kits available.

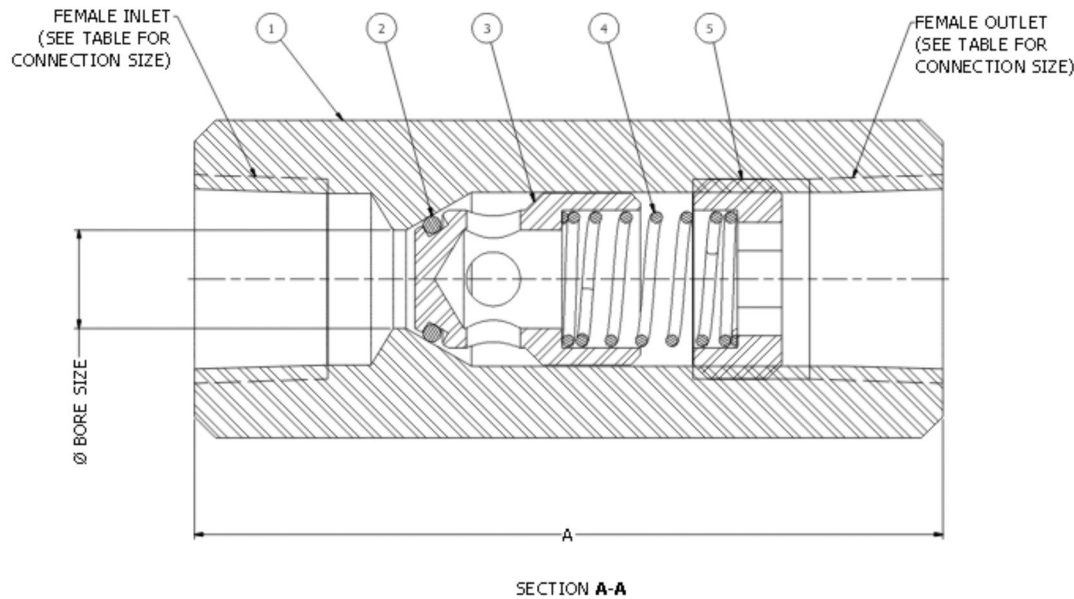
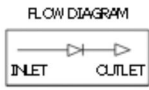


'EC' Series Check Valve

PART NO	CONNECTION SIZE	A	B	BORE	CRACKING PRESSURE	CV	WEIGHT
EC2NS	1/4" NPT	59	22	5	6 psi ± 25%	0.53	0.16 Kg
EC3NS	3/8" NPT	64	22	8	6 psi ± 25%	0.97	0.15 Kg
EC4NS	1/2" NPT	76	28	10	15 psi ± 25%	1.78	0.30 Kg
EC6NS	3/4" NPT	85	35	10	15 psi ± 25%	1.78	0.53 Kg
EC8NS	1" NPT	95	45	10	15 psi ± 25%	1.78	1.0 Kg

DIMENSIONS SHOWN ARE IN METRIC MM

ITEM	DESCRIPTION	MATERIAL	QTY
1	VALVE BODY	A479 UNS S31600	1
2	O-RING	HNBR 90	1
3	PISTON	A479 UNS S31600	1
4	SPRING	UNS S30200	1
5	INSERT	A479 UNS S31600	1



1/4" TO 1" NPT FEMALE INLET x FEMALE OUTLET
'EC' SERIES CHECK VALVE IN 316 ST/ST MATERIAL
RATED 10,000psi.

