

Parker Hannifin Couplings - Tema T-Series

Technical Specification - Standard /Pressure Eliminator



- Material Coupling Body: Brass, Nickel Plated Chromated
- Material Sleeve: Steel Hardened, Zinc Plated, Passiv., Sealed
- Material Locking Ring: Brass, Zinc-Iron Coated, Black Passiv., Sealed
- Seals: NBR/FKM
- Material Plug: Steel Hardened, Zinc Plated, Passiv., Sealed
- Material Valve: Brass
- Seals: NBR/FKM



Features & Benefits

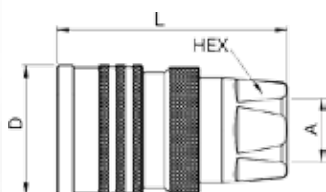
- High operating pressure
- Compact dimension
- Connection up to operating pressure on Pressure Eliminator (PE) version
- Double safety through a double O-ring seal
- Safety ring prevents unintentional coupling

Working Temperatures

- -30°C up to +100°C (NBR)
- -25°C up to +200°C (FKM)
- *Temperature depends on medium*
- Special seals are available on request

Couplings - Female Thread

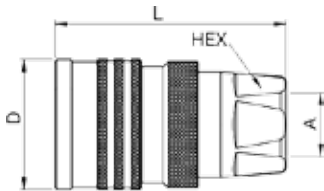
Body Size	Conn.	Hex mm	L mm	D mm	Valve	Working Press. conn. bar	Version	Seal
1/8"	G 1/8	15	38	18	with	200	Standard	NBR
1/8"	G 1/8	15	38	18	with	200	Standard	FKM
1/8"	G 1/8	15	38	18	without	200	Standard	NBR
1/8"	G 1/8	15	38	18	without	200	Standard	FKM
1/4"	G 1/4	21	64	25	with	450	Standard	NBR
1/4"	G 1/4	21	64	25	with	450	Standard	FKM
1/4"	G 1/4	21	64	25	without	450	Standard	NBR
1/4"	G 1/4	21	64	25	without	450	Standard	FKM
3/8"	G 3/8	24	60	34	with	350	Standard	NBR
3/8"	G 3/8	24	60	34	with	350	Standard	FKM



Female Thread

Parker Hannifin Couplings - Tema T-Series

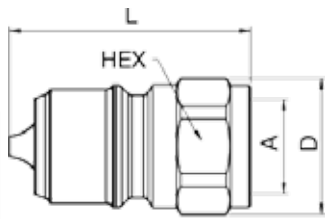
Couplings - Female Thread



Female Thread

Body Size	Conn.	Hex mm	L mm	D mm	Valve	Working Press. conn. bar	Version	Seal
3/8"	G 3/8	24	60	34	without	350	Standard	NBR
3/8"	G 3/8	24	60	34	without	350	Standard	FKM
3/8"	G 3/8	24	60	34	without	350	High Press. Water	NBR
3/8"	G 3/8	24	60	34	without	350	High Press. Water	FKM
3/8"	G 3/8	24	60	34	without	350	High Press. Water	EPDM
3/8"	G 3/8	29	60	34	without	350	High Press. Water	NBR
3/8"	G 3/8	29	60	34	without	350	High Press. Water	FKM
3/8"	G 3/8	29	60	34	without	350	High Press. Water	EPDM
1/2"	G 1/2	30	65	40	with	300	Standard	NBR
1/2"	G 1/2	30	65	40	with	300	Standard	FKM
1/2"	G 1/2	30	65	40	without	300	Standard	NBR
1/2"	G 1/2	30	65	40	without	300	Standard	FKM
3/4"	G 3/4	38	73	52	with	280	Standard	NBR
3/4"	G 3/4	38	73	52	with	280	Standard	FKM
3/4"	G 3/4	38	73	52	without	280	Standard	NBR
3/4"	G 3/4	38	73	52	without	280	Standard	FKM
1"	G 1	45	88	62	with	250	Standard	NBR
1"	G 1	45	88	62	with	250	Standard	FKM
1"	G 1	45	88	62	without	250	Standard	NBR
1"	G 1	45	88	62	without	250	Standard	FKM
1 1/2"	G 1 1/2	60	112	73	with	200	Standard	NBR
1 1/2"	G 1 1/2	60	112	73	with	200	Standard	FKM
1 1/2"	G 1 1/2	60	112	73	with	50	Brass	NBR
1 1/2"	G 1 1/2	60	112	73	with	50	Brass	FKM
1 1/2"	G 1 1/2	60	112	73	without	200	Standard	NBR
1 1/2"	G 1 1/2	60	112	73	without	200	Standard	FKM
1 1/2"	G 1 1/2	60	112	73	without	50	Brass	NBR
1 1/2"	G 1 1/2	60	112	73	without	50	Brass	FKM
2"	G 2	75	144	90	with	180	Standard	NBR
2"	G 2	75	144	90	with	180	Standard	FKM
2"	G 2	75	144	90	without	180	Standard	NBR
2"	G 2	75	144	90	without	180	Standard	FKM

Parker Hannifin Couplings - Tema T-Series



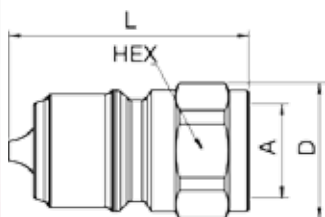
Female Thread

Plugs Female Thread

Body Size	Conn.	Hex mm	L mm	D mm	Valve	Working Press. conn. bar	Version	Seal
1/8"	G 1/8	15	36	17	with	200	Standard	NBR
1/8"	G 1/8	15	38	17	with	200	Standard	FKM
1/8"	G 1/8	15	36	17	without	200	Standard	
1/4"	G 1/4	19	45	21	with	450	Standard	NBR
1/4"	G 1/4	19	45	21	with	450	Standard	FKM
1/4"	G 1/4	19	45	21	without	450	Standard	
3/8"	G 3/8	22	42	24	with	350	Standard	NBR
3/8"	G 3/8	22	42	24	with	350	Standard	FKM
3/8"	G 3/8	22	38	24	without	350	Standard	
1/2"	G 1/2	27	46	30	with	320	Standard	NBR
1/2"	G 1/2	27	46	30	with	320	Standard	FKM
1/2"	G 1/2	27	42	30	without	320	Standard	
3/4"	G 3/4	36	52	39	with	300	Standard	NBR
3/4"	G 3/4	36	52	39	with	300	Standard	FKM
3/4"	G 3/4	36	47	39	without	300	Standard	
1"	G 1	46	60	49	with	280	Standard	NBR
1"	G 1	46	60	49	with	280	Standard	FKM
1"	G 1	46	53	49	without	280	Standard	
1 1/2"	G 1 1/2	60	107	67	with	200	Standard	NBR
1 1/2"	G 1 1/2	60	107	67	with	200	Standard	FKM
1 1/2"	G 1 1/2	60	107	67	with	50	Brass	NBR
1 1/2"	G 1 1/2	60	107	67	with	50	Brass	FKM
1 1/2"	G 1 1/2	60	107	67	without	200	Standard	
1 1/2"	G 1 1/2	60	107	67	without	50	Brass	
2"	G 2	75	142	85	with	180	Standard	NBR
2"	G 2	75	142	85	with	180	Standard	FKM
2"	G 2	75	142	85	without	180	Standard	NBR

Super Nipple

3/4"	G 3/4	36	52	39	with	300	Standard	NBR
------	-------	----	----	----	------	-----	----------	-----

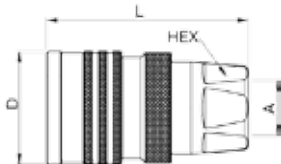


Female Thread

Parker Hannifin Couplings - Tema T-Series

Couplings Female Thread

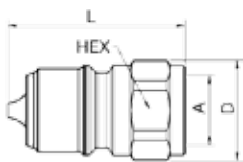
Body Size	Conn.	Hex mm	L mm	D mm	Valve	Working Press. conn. bar	Version	Seal
3/8"	G 3/8	24	60	34	with	350	Press. Eliminator	NBR
3/8"	G 3/8	24	60	34	with	350	Press. Eliminator	FKM
1/2"	G 1/2	30	65	40	with	300	Press. Eliminator	NBR
1/2"	G 1/2	30	65	40	with	300	Press. Eliminator	FKM
3/4"	G 3/4	38	72	52	with	280	Press. Eliminator	NBR
3/4"	G 3/4	38	72	52	with	280	Press. Eliminator	FKM
1"	G 1	45	88	62	with	250	Press. Eliminator	NBR
1"	G 1	45	88	62	with	250	Press. Eliminator	FKM
1 1/2"	G 1 1/2	60	112	73	with	200	Press. Eliminator	NBR
1 1/2"	G 1 1/2	60	112	73	with	200	Press. Eliminator	FKM



 Female Thread

Plugs - Female Thread

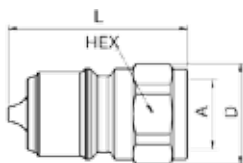
Body Size	Conn.	Hex mm	L mm	D mm	Valve	Working Press. conn. bar	Version	Seal
3/8"	G 3/8	22	43	24	with	350	Press. Eliminator	NBR
3/8"	G 3/8	22	43	24	with	350	Press. Eliminator	FKM
1/2"	G 1/2	27	47	30	with	320	Press. Eliminator	NBR
1/2"	G 1/2	27	47	30	with	320	Press. Eliminator	FKM
3/4"	G 3/4	36	53	39	with	300	Press. Eliminator	NBR
3/4"	G 3/4	36	53	39	with	300	Press. Eliminator	FKM
1"	G 1	46	61	49	with	280	Press. Eliminator	NBR
1"	G 1	46	61	49	with	280	Press. Eliminator	FKM
1 1/2"	G 1 1/2	60	107	67	with	200	Press. Eliminator	NBR
1 1/2"	G 1 1/2	60	107	67	with	200	Press. Eliminator	FKM



 Female Thread

Super Nipple

3/4"	G 3/4	36	53	39	with	300	Press. Eliminator	NBR
------	-------	----	----	----	------	-----	-------------------	-----

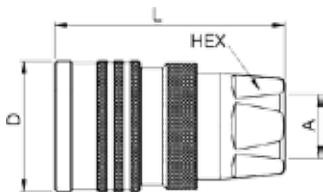


 Female Thread

Parker Hannifin Couplings - Tema T-Series

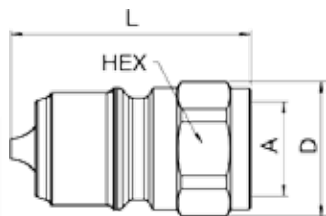
Couplings Stainless Steel

Body Size	Conn.	Hex mm	L mm	D mm	Valve	Working Press. conn. bar ⁴	Version	Seal
1/8"	G 1/8	15	38	18	with	200	Stainless Steel	FKM
1/8"	G 1/8	15	38	18	with	200	Stainless Steel	FKM ¹
1/8"	G 1/8	15	38	18	without	200	Stainless Steel	FKM
1/4"	G 1/4	21	64	25	with	250	Stainless Steel	FKM
1/4"	G 1/4	21	64	25	without	250	Stainless Steel	FKM
3/8"	G 3/8	24	60	34	with	300	Stainless Steel	FKM
3/8"	G 3/8	24	60	34	without	350	Stainless Steel	FKM
1/2"	G 1/2	30	65	40	with	300	Stainless Steel	FKM
1/2"	G 1/2	30	65	40	without	300	Stainless Steel	FKM
3/4"	G 3/4	38	73	52	with	250	Stainless Steel	FKM
3/4"	G 3/4	38	73	52	without	250	Stainless Steel	FKM
1"	G 1	45	88	62	with	250	Stainless Steel	FKM
1"	G 1	45	88	62	without	250	Stainless Steel	FKM
1 1/2"	G 1 1/2	60	112	73	with	150	Stainless Steel	FKM
1 1/2"	G 1 1/2	60	112	73	without	150	Stainless Steel	FKM
2"	G 2	75	144	90	with	120	Stainless Steel	FKM
2"	G 2	75	144	90	without	120	Stainless Steel	FKM



Female Thread

Parker Hannifin Couplings - Tema T-Series



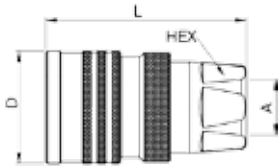
Female Thread

Plugs T-Series Stainless Steel								
Body Size	Conn.	Hex mm	L mm	D mm	Valve	Working Press. conn. bar ⁴	Version	Seal
1/8"	G 1/8	15	36	17	with	200	Stainless Steel	FKM
1/8"	G 1/8	15	38	17	with	200	Stainless Steel	FKM ¹
1/8"	G 1/8	15	36	17	without	200	Stainless Steel	
1/4"	G 1/4	19	45	21	with	250	Stainless Steel	FKM
1/4"	G 1/4	19	45	21	with	250	Stainless Steel	FKM ¹
1/4"	G 1/4	19	45	21	with	170	High Press. Water	FKM ^{1,3}
1/4"	G 1/4	19	45	21	without	250	Stainless Steel	
1/4"	G 1/4	19	45	21	without	450	Stainless Steel	²
1/4"	G 1/4	19	45	21	without	170	Stainless Steel	²
3/8"	G 3/8	22	42	24	with	300	Stainless Steel	FKM
3/8"	G 3/8	22	42	24	with	300	Stainless Steel	NBR
3/8"	G 3/8	22	42	24	with	300	Stainless Steel	FKM ¹
3/8"	G 3/8	22	38	24	without	300	Stainless Steel	
3/8"	G 3/8	22	38	24	without	170	Stainless Steel	²
1/2"	G 1/2	27	46	30	with	300	Stainless Steel	FKM
1/2"	G 1/2	27	42	30	without	300	Stainless Steel	
3/4"	G 3/4	36	52	39	with	250	Stainless Steel	FKM
3/4"	G 3/4	36	47	39	without	250	Stainless Steel	
1"	G 1	46	60	49	with	250	Stainless Steel	FKM
1"	G 1	46	53	49	without	250	Stainless Steel	
1 1/2"	G 1 1/2	60	107	67	with	150	Stainless Steel	FKM
1 1/2"	G 1 1/2	60	107	67	without	150	Stainless Steel	
2"	G 2	75	142	85	with	120	Stainless Steel	FKM
2"	G 2	75	142	85	without	120	Stainless Steel	

Parker Hannifin Couplings - Tema T-Series

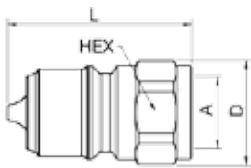
Couplings T-Series Stainless Steel PE

Body Size	Conn.	Hex mm	L mm	D mm	Valve	Working Press. conn. bar ⁴	Version	Seal
3/8"	G 3/8	24	60	34	with	300	Press. Eliminator	FKM
3/8"	G 3/8	24	60	34	with	300	Press. Eliminator	FKM ¹
1/2"	G 1/2	30	65	40	with	300	Press. Eliminator	FKM
1/2"	G 1/2	30	65	40	with	300	Press. Eliminator	FKM ¹
3/4"	G 3/4	38	72	52	with	250	Press. Eliminator	FKM
3/4"	G 3/4	38	72	52	with	250	Press. Eliminator	FKM ¹
1"	G 1	45	88	62	with	250	Press. Eliminator	FKM
1"	G 1	45	88	62	with	250	Press. Eliminator	FKM



Plugs T-Series Stainless Steel

Body Size	Conn.	Hex mm	L mm	D mm	Valve	Working Press. conn. bar ⁴	Version	Seal
3/8"	G 3/8	22	43	24	with	350	Press. Eliminator	FKM
3/8"	G 3/8	22	43	24	with	350	Press. Eliminator	FKM
1/2"	G 1/2	27	47	30	with	300	Press. Eliminator	FKM
1/2"	G 1/2	27	47	30	with	300	Press. Eliminator	FKM ¹
3/4"	G 3/4	36	53	39	with	250	Press. Eliminator	FKM
3/4"	G 3/4	36	53	39	with	250	Press. Eliminator	FKM ¹
1"	G 1	46	61	49	with	250	Press. Eliminator	NBR
1"	G 1	46	61	49	with	250	Press. Eliminator	FKM ¹



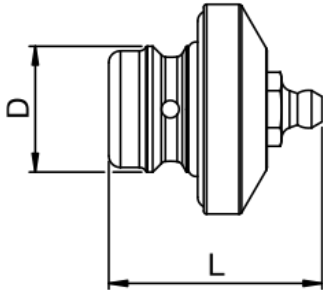
¹ Valve made of brass

² Material. AISI 420 hardened

³ Suitable for high pressure water, AISI 303

⁴ For pulsating pressure, the pressure must not exceed 50% of the given value

Parker Hannifin Couplings - Tema T-Series



Lubrication Nipples

Body Size	Version	L (mm)	D (mm)
3/8"	for coupling	36	22
1/2"	for coupling	41	25
3/4"	for coupling	44	33
1"	for coupling	46	41

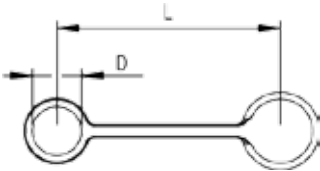
For problem free operating with longer lifetime – especially in cold climates.

Seal-Kit

Body Size	Version	Material
1/8"	for coupling	NBR
1/8"	for coupling	FKM
1/4"	for coupling	NBR
1/4"	for coupling	FKM
3/8"	for coupling	NBR
3/8"	for coupling	FKM
1/2"	for coupling	NBR
1/2"	for coupling	FKM
3/4"	for coupling	NBR
3/4"	for coupling	FKM
1"	for coupling	NBR
1"	for coupling	FKM
1 1/2"	for coupling	NBR
1 1/2"	for coupling	FKM
2"	for coupling	NBR
2"	for coupling	FKM

The valve seal is crimped and can not be changed.

Parker Hannifin Couplings - Tema T-Series



Dust Protection				T-Series	
Body Size	Version	L (mm)	D (mm)	Material	Color
1/8"	for coupling	66	15	PVC	Red
1/8"	For Plug	55	13.4	PVC	Red
1/4"	for coupling	145	19	PVC	Blue
1/4"	for plug	145	19	PVC	Blue
3/8"	for coupling	145	23	PVC	Blue
3/8"	for plug	145	23	PVC	Blue
3/8"	for coupling	145	23	PVC	Yellow
3/8"	for plug	145	23	PVC	Yellow
1/2"	for coupling	170	28	PVC	Blue
1/2"	for plug	170	28	PVC	Blue
3/4"	for coupling	195	33	PVC	Blue
3/4"	for plug	195	33	PVC	Blue
1"	for coupling	230	42	PVC	Blue
1"	for plug	230	42	PVC	Blue
1 1/2"	for coupling	330	56	PVC	Black
1 1/2"	for plug	330	56	PVC	Black
2"	for coupling	335	63	EBA	Black
2"	for plug	335	63	EBA	Black

When coupling and plug is connected it is recommended to connect dust protections - to keep these clean, too. Further colours on request.