



FEATURES



SAFETY FIRST

Product is important, but the safety of your team is essential. With Dry-Mate Dry-Disconnects, leakage from disconnecting is miniscule compared to standard valves. When properly installed and operated, the danger posed by harmful chemicals contacting your team is greatly reduced.



EVERY DROP COUNTS

Your product is money. Why waste money in spilling your product every time you disconnect? With Dry-Mate, your spillage amount will be significantly reduced. At 3 mL product spillage for a 2" line, you can have peace of mind that your product is being placed where it should be and not on the ground.



PRODUCT ONLY WHERE YOU WANT IT

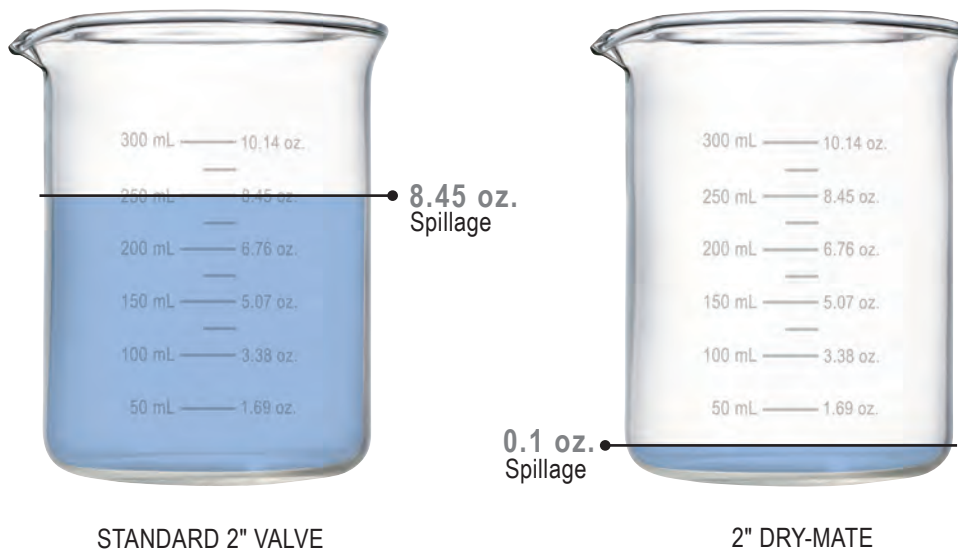
When a Dry-Mate is properly installed and operated, the assembly will not accidentally separate while fluid is flowing; preventing costly mishaps.



DITCH THE MAINTENANCE

All that spillage has to go somewhere. If you are collecting large areas of spillage run-off, you have to have it pumped out. Reduce your maintenance costs on your spillage pits by keeping fluids contained.

NOT YOUR TYPICAL SPILLAGE



STANDARD 2" VALVE

2" DRY-MATE

99% SPILLAGE REDUCTION

- Reduction of typical spillage using standard 2" valve with cam lock connection vs. Dry-Mate
- 8.45 oz. (250 mL) vs. 0.1 oz. (3 mL) spillage
- At five disconnections per day, this is **over 118 gallons (450 liters) saved per year**; enough to fill the gas tanks of eight mid-size automobiles

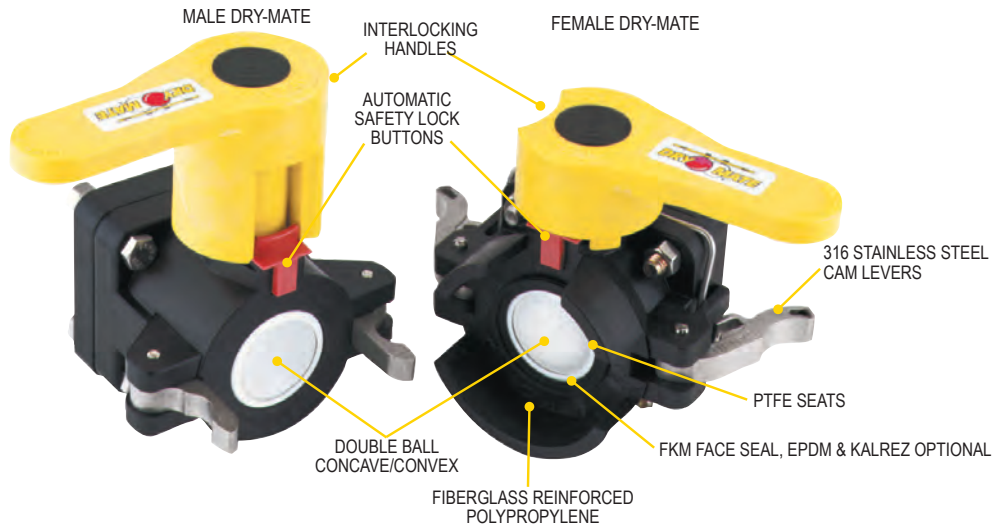


DRY-MATES

1½" POLY DRY-MATES

FEATURES

- Lightweight
- Easy to use
- Economical
- Reduces risk of exposure
- Wide range of chemical resistance
- Unrestricted 1½" flow
- Patented double ball design with cam lever connection
- When properly installed and operated, the assembly will not accidentally separate while fluid is flowing; preventing costly mishaps
- Spillage data: 1½" = 2ml



1½" POLY MALE DRY-MATE

DESCRIPTION	MAX PSI	PIPE SIZE	OPENING THRU BALL	QTY
1½" MALE X FPT NPT W/FKM SEALS	100	1½"	1½"	1
1½" MALE X FPT BSP W/FKM SEALS	100	1½"	1½"	1
1½" MALE X FPT NPT W/EPDM SEALS	100	1½"	1½"	1

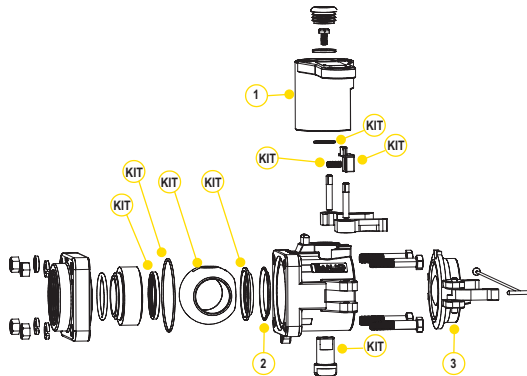
1½" POLY FEMALE DRY-MATE

DESCRIPTION	MAX PSI	PIPE SIZE	OPENING THRU BALL	QTY
1½" FEMALE X FPT NPT W/FKM SEALS	100	1½"	1½"	1
1½" FEMALE X FPT BSP W/FKM SEALS	100	1½"	1½"	1
1½" FEMALE X FPT NPT W/EPDM SEALS	100	1½"	1½"	1



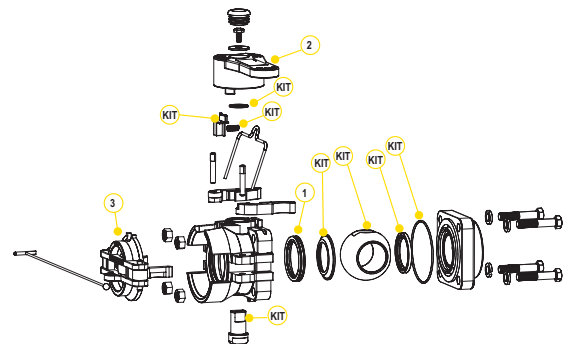
REPAIR KIT INCLUDES:

- Ball
- Body gasket
- Thrust washer
- Ball seats
- Upper stem bushing
- Stem o-ring



REPLACEMENT PARTS MALE

ITEM	DESCRIPTION	QTY
1	MALE HANDLE	1
1	LOW PROFILE HANDLE	1
2	FKM FACE SEAL	1
2	EPDM FACE SEAL	1
2	KALREZ® FACE SEAL	1
3	DUST CAP	1
KIT	REPAIR KIT FOR DM150A	1

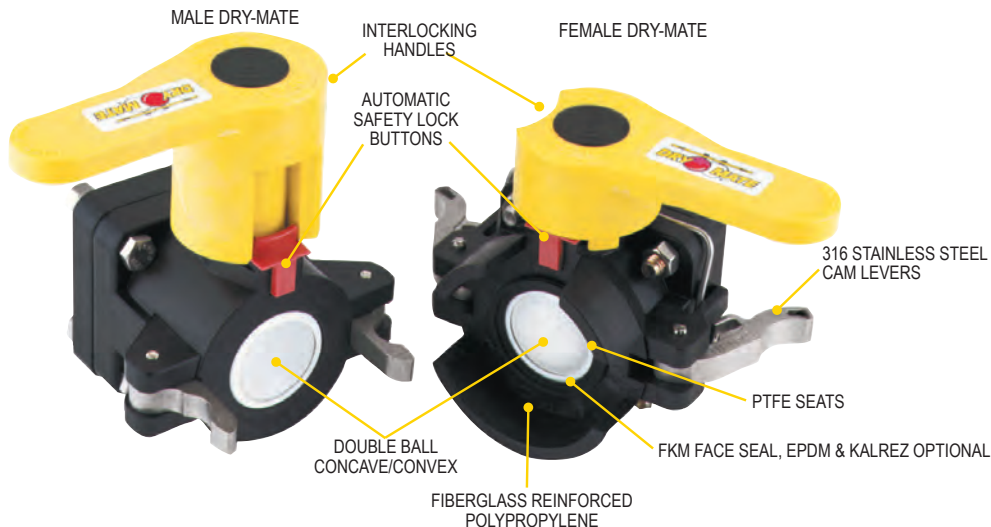


REPLACEMENT PARTS FEMALE

ITEM	PART NO	DESCRIPTION	QTY
1	DM20294A	FKM FACE SEAL	1
1	DM20295A	EPDM FACE SEAL	1!
1	DM20296	KALREZ® FACE SEAL	1
2	DM20153F	FEMALE HANDLE	1
3	DM200PL	DUST PLUG	1
KIT	DM20200D	REPAIR KIT FOR DM150D	1

DRY-MATES

2" POLY DRY-MATES



2" POLY MALE DRY-MATE

DESCRIPTION	MAX PSI	PIPE SIZE	OPENING THRU BALL	QTY
2" MALE X FPT NPT W/FKM SEALS	100	2"	1½"	1
2" MALE X FPT BSP W/FKM SEALS	100	2"	1½"	1
2" MALE X FPT NPT W/EPDM SEALS	100	2"	1½"	1
2" MALE X MALE NPT W/LOW PROFILE HANDLE	100	2"	1½"	1

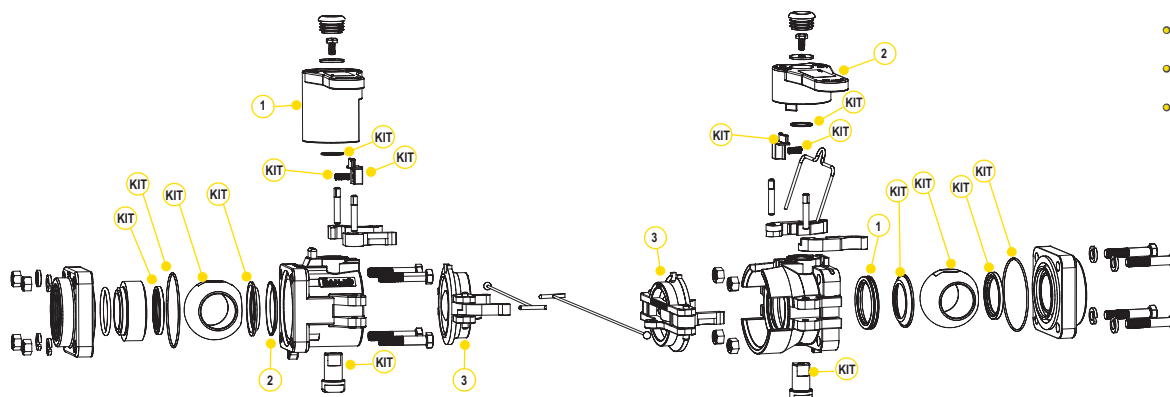
2" POLY FEMALE DRY-MATE

DESCRIPTION	MAX PSI	PIPE SIZE	OPENING THRU BALL	QTY
2" FEMALE X FPT NPT W/FKM SEALS	100	2"	1½"	1
2" FEMALE X FPT BSP W/FKM SEALS	100	2"	1½"	1
2" FEMALE W/EPDM SEALS	100	2"	1½"	1



REPAIR KIT INCLUDES:

- Ball
- Body gasket
- Thrust washer
- Ball seats
- Upper stem bushing
- Stem o-ring



REPLACEMENT PARTS MALE

ITEM	DESCRIPTION	QTY
1	MALE HANDLE	1
1	LOW PROFILE HANDLE	1
2	FKM FACE SEAL	1
2	EPDM FACE SEAL	1
2	KALREZ® FACE SEAL	1
3	DUST CAP	1
KIT	REPAIR KIT FOR DM200A & DM200AE	1

REPLACEMENT PARTS FEMALE

ITEM	DESCRIPTION	QTY
1	FKM FACE SEAL	1
1	EPDM FACE SEAL	1
1	KALREZ® FACE SEAL	1
2	FEMALE HANDLE	1
3	DUST PLUG	1
KIT	REPAIR KIT FOR DM200D & DM200DE	1

DRY-MATES

2" FULL PORT POLY DRY-MATES

FEATURES

- Lightweight
- Easy to use
- Economical
- Reduces risk of exposure
- Wide range of chemical resistance
- Unrestricted 2" flow
- Patented double ball design with cam lever connection
- When properly installed and operated, the assembly will not accidentally separate while fluid is flowing; preventing costly mishaps
- Spillage data: 2" FP = 3.6ml

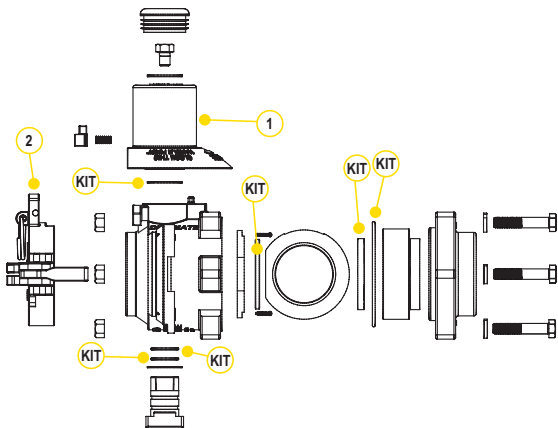


2" FULL PORT POLY DRY-MATES				
DESCRIPTION	MAX PSI	PIPE SIZE	OPENING THRU BALL	QTY
2" FEMALE X FPT NPT W/FKM SEALS	225	2"	2"	1
2" MALE X FPT W/FKM SEALS	225	2"	2"	1

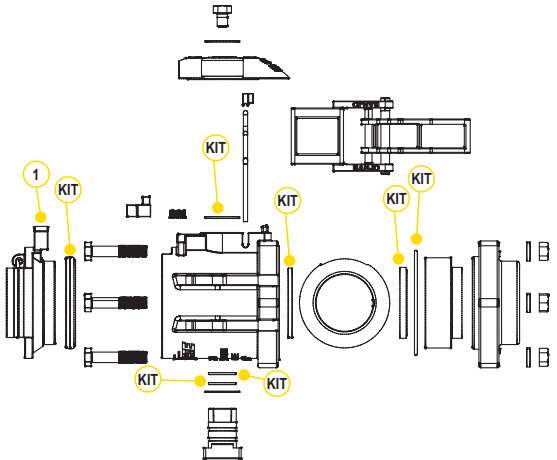


REPAIR KIT INCLUDES:

- Body gasket
- Thrust washer
- Ball seats
- Upper stem bushing
- Stem o-ring
- Face seal



REPLACEMENT PARTS MALE		
ITEM	DESCRIPTION	QTY
1	MALE HANDLE	1
2	DUST CAP	1
KIT	REPAIR KIT	1



REPLACEMENT PARTS FEMALE		
ITEM	DESCRIPTION	QTY
1	DUST PLUG	1
1	REPAIR KIT	1

DRY-MATES

3" FULL PORT POLY DRY-MATES

FEATURES

- Lightweight
- Easy to use
- Economical
- Reduces risk of exposure
- Wide range of chemical resistance
- Unrestricted 3" flow
- Patented double ball design with cam lever connection
- When properly installed and operated, the assembly will not accidentally separate while fluid is flowing; preventing costly mishaps
- Spillage data: 3" = 20ml



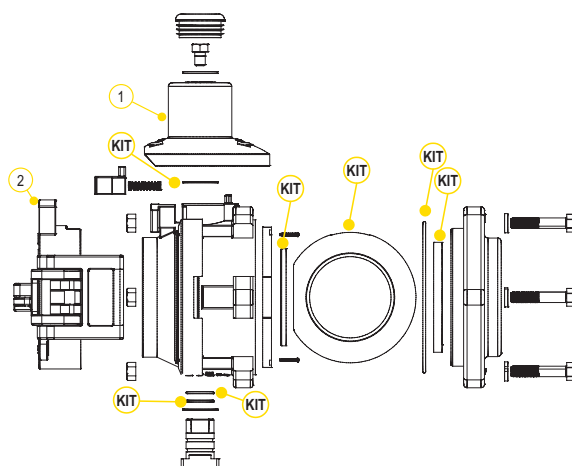
DM300DFP



DM300AFP

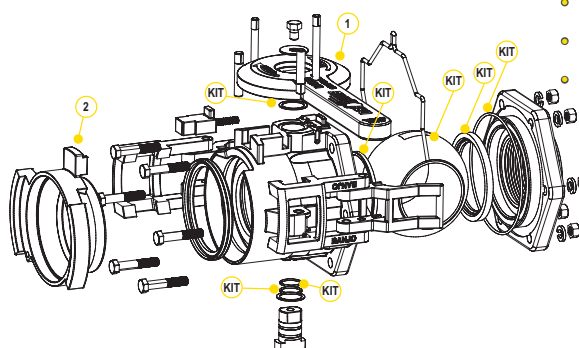
3" FULL PORT POLY DRY-MATES

DESCRIPTION	MAX PSI	PIPE SIZE	OPENING THRU BALL	QTY
3" FP MALE X 3" FEMALE NPT THREADS W/ FKM SEALS	150	3"	3"	1
3" FP FEMALE X 3" FEMALE NPT THREADS W/ FKM SEALS	150	3"	3"	1



REPLACEMENT PARTS MALE

ITEM	DESCRIPTION	QTY
1	MALE HANDLE	1
2	DUST CAP	1
KIT	REPAIR KIT	1



REPLACEMENT PARTS FEMALE

ITEM	DESCRIPTION	QTY
1	FEMALE HANDLE	1
2	DUST PLUG	1
KIT	REPAIR KIT	1

REPAIR KIT INCLUDES:

- Ball
- Body gasket
- Thrust washer
- Ball seats
- Upper stem bushing
- Stem o-ring
- Face seal

DRY-MATES

1" FULL PORT STAINLESS STEEL DRY-MATES

FEATURES

- 316 stainless steel construction
- Unrestricted 1" flow
- Patented double ball design with cam lever connection
- 300°F maximum operating temperature
- 100% PTFE ball seats
- When properly installed and operated, the assembly will not accidentally separate while fluid is flowing; preventing costly mishaps
- Spillage data: 1" FP = 1.7ml



DM100ASS

DM100DSS

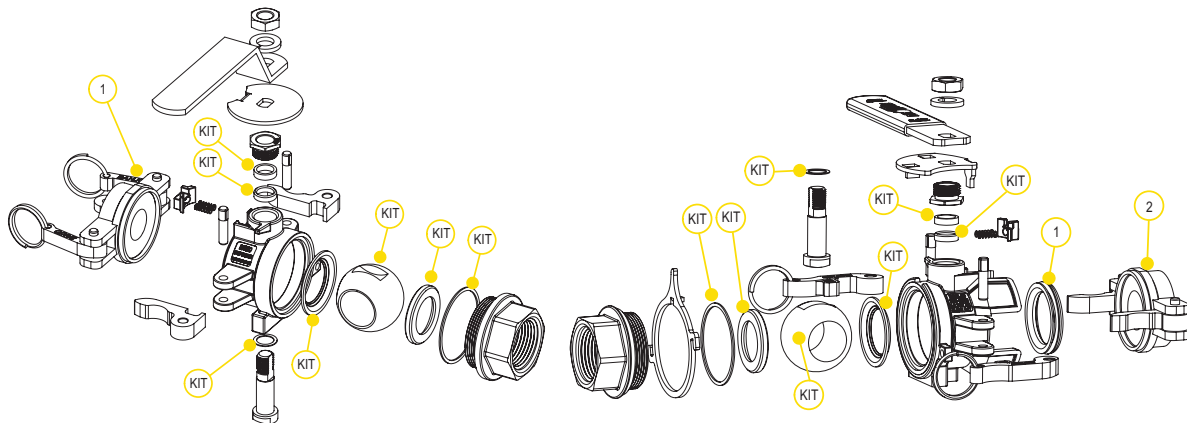
1" FULL PORT STAINLESS STEEL DRY-MATE

DESCRIPTION	MAX PSI	PIPE SIZE	OPENING THRU BALL	QTY
1" MALE X FPT NPT W/ PTFE SEALS	150	1"	1"	1
1" MALE X FPT BSP W/ PTFE SEALS	150	1"	1"	1
1" FEMALE X FPT NPT W/ FKM SEALS	150	1"	1"	1
1" FEMALE X FPT NPT W/ EPDM SEALS	150	1"	1"	1
1" FEMALE X FPT BSP W/ FKM SEALS	150	1"	1"	1



REPAIR KIT INCLUDES:

- Ball
- Body gasket
- Thrust washer
- Ball seats
- Upper stem bushing
- Stem o-ring
- Face seal



REPLACEMENT PARTS MALE

ITEM	DESCRIPTION	QTY
1	DUST CAP	1
KIT	REPAIR KIT	1

REPLACEMENT PARTS FEMALE

ITEM	DESCRIPTION	QTY
1	FKM FACE SEAL	1
1	EPDM FACE SEAL	1
1	KALREZ® FACE SEAL	1
2	POLY PLUG	1
KIT	FKM REPAIR KIT	1

DRY-MATES

1½" FULL PORT STAINLESS STEEL DRY-MATES

FEATURES

- 316 stainless steel construction
- Unrestricted 1½" flow
- Patented double ball design with cam lever connection
- 300°F maximum operating temperature
- 100% PTFE ball seats
- When properly installed and operated, the assembly will not accidentally separate while fluid is flowing; preventing costly mishaps
- Spillage data: 1½" FP = 3ml



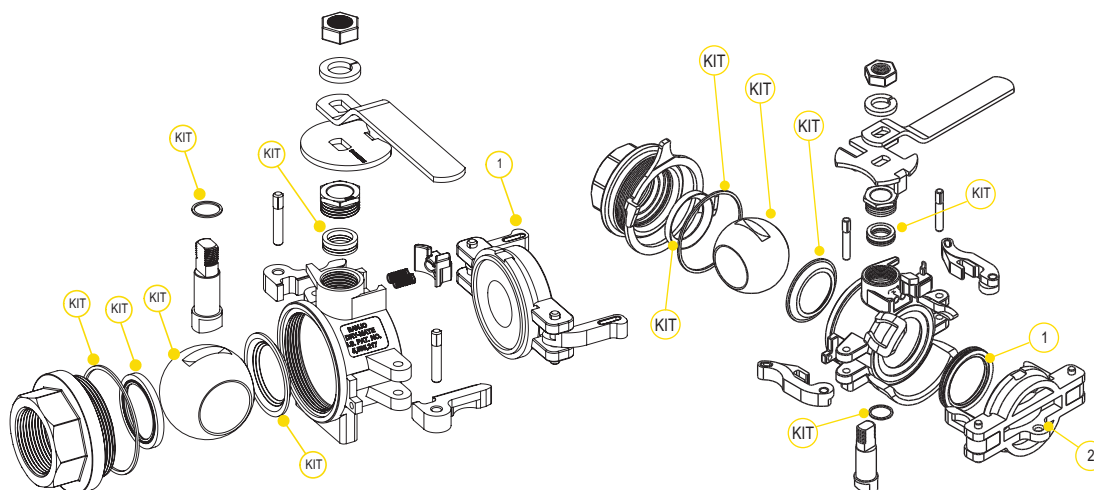
DM150ASS



DM150DSS

1½" FULL PORT STAINLESS STEEL DRY-MATE

DESCRIPTION	MAX PSI	PIPE SIZE	OPENING THRU BALL	QTY
1½" MALE X FPT NPT W/ PTFE SEALS	150	1½"	1½"	1
1½" MALE X FPT BSP W/ PTFE SEALS	150	1½"	1½"	1
1½" FEMALE X FPT NPT W/ FKM SEALS	150	1½"	1½"	1
1½" FEMALE X FPT NPT W/ EPDM SEALS	150	1½"	1½"	1
1½" FEMALE X FPT BSP W/ FKM SEALS	150	1½"	1½"	1



REPAIR KIT INCLUDES:

- Ball
- Body gasket
- Thrust washer
- Ball seats
- Upper stem bushing
- Stem o-ring
- Face seal

REPLACEMENT PARTS MALE

ITEM	DESCRIPTION	QTY
1	DUST CAP	1
KIT	REPAIR KIT	1

REPLACEMENT PARTS FEMALE

ITEM	DESCRIPTION	QTY
1	FKM FACE SEAL	1
1	EPDM FACE SEAL	1
1	KALREZ® FACE SEAL	1
2	DUST PLUG	1
KIT	FKM REPAIR KIT	1

DRY-MATES

2" STAINLESS STEEL DRY-MATES

FEATURES

- 316 stainless steel construction
- Patented double ball design with cam lever connection
- 300°F maximum operating temperature
- 100% PTFE ball seats
- When properly installed and operated, the assembly will not accidentally separate while fluid is flowing; preventing costly mishaps
- Spillage data: 2" = 3.6ml



DM200ASS



DM200DSS

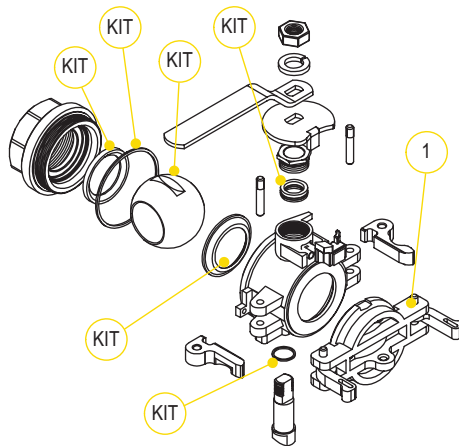


2" STANDARD PORT STAINLESS STEEL DRY-MATE

DESCRIPTION	MAX PSI	PIPE SIZE	OPENING THRU BALL	QTY
2" MALE X FPT NPT W/ PTFE SEALS	150	2"	1½"	1
2" MALE X FPT BSP W/ PTFE SEALS	150	2"	1½"	1
2" FEMALE X FPT NPT W/ FKM SEALS	150	2"	1½"	1
2" FEMALE X FPT NPT W/ KALREZ® SEALS	150	2"	1½"	1
2" FEMALE X FPT BSP W/ FKM SEALS	150	2"	1½"	1

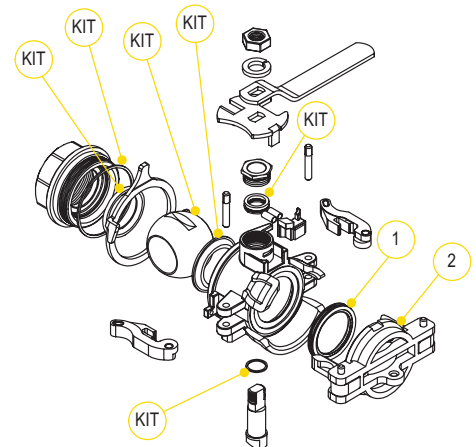
REPAIR KIT INCLUDES:

- Ball
- Body gasket
- Thrust washer
- Ball seats
- Upper stem bushing
- Stem o-ring
- Face seal



REPLACEMENT PARTS MALE

ITEM	PART NO	DESCRIPTION	QTY
1	DM200ACAP	DUST CAP	1
KIT	DM201SS	REPAIR KIT	1



REPLACEMENT PARTS FEMALE

ITEM	PART NO	DESCRIPTION	QTY
1	DM20294A	FKM FACE SEAL	1
1	DB20295	EPDM FACE SEAL	1
1	DM20296	KALREZ® FACE SEAL	1
2	DM200APL	POLY PLUG	1
KIT	DM202SSV	FKM REPAIR KIT	1

DRY-MATES

2" FULL PORT STAINLESS STEEL DRY-MATES

FEATURES

- 316 stainless steel construction
- Unrestricted 2" flow
- Patented double ball design with cam lever connection
- 300°F maximum operating temperature
- 100% PTFE ball seats
- When properly installed and operated, the assembly will not accidentally separate while fluid is flowing; preventing costly mishaps
- Spillage data: 2" FP = 3.8ml



DM220ABSS



DM220DBSS

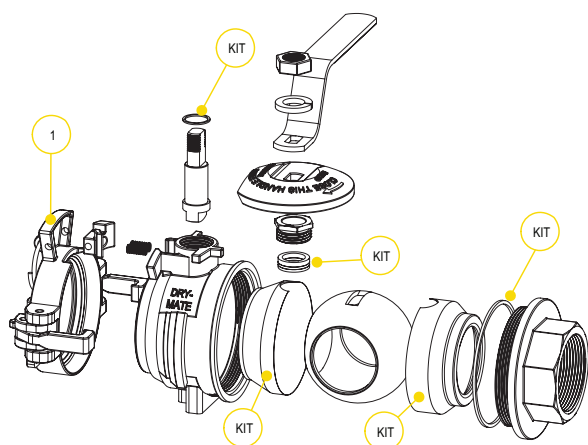
2" FULL PORT STAINLESS STEEL DRY-MATE

DESCRIPTION	MAX PSI	PIPE SIZE	OPENING THRU BALL	QTY
2" FULL PORT MALE X FPT NPT W/ PTFE SEALS	300	2"	2"	1
2" FULL PORT MALE X FPT BSP W/ PTFE SEALS	300	2"	2"	1
2" FULL PORT FEMALE X FPT NPT W/ FKM SEALS	300	2"	2"	1
2" FULL PORT FEMALE X FPT BSP W/ FKM SEALS	300	2"	2"	1



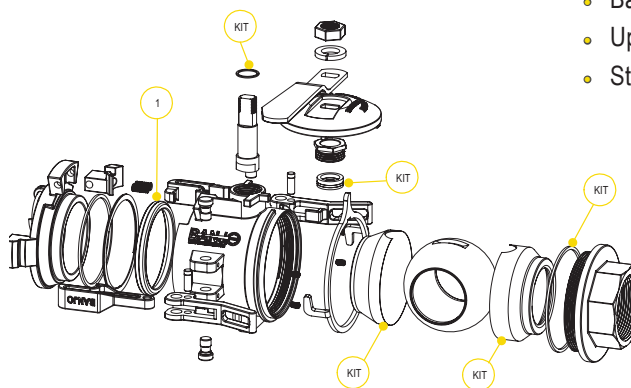
REPAIR KIT INCLUDES:

- Body gasket
- Thrust washer
- Ball seats
- Upper stem bushing
- Stem o-ring



REPLACEMENT PARTS MALE

ITEM	DESCRIPTION	QTY
1	DUST CAP	1
KIT	REPAIR KIT	1



REPLACEMENT PARTS FEMALE

ITEM	DESCRIPTION	QTY
1	FKM FACE SEAL	1
1	KALREZ® FACE SEAL	1
KIT	REPAIR KIT	1